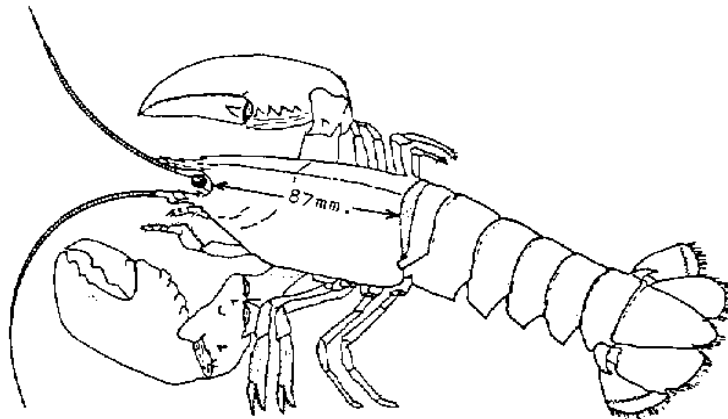


**KENT AND ESSEX SEA FISHERIES COMMITTEE**  
MEASURES APPLYING WITHIN THE KENT AND ESSEX SEA FISHERIES DISTRICT  
Information Sheet - 2010

**LOBSTER (*Homarus gammarus*)**

**The Undersized Lobsters Order 2000**



Lobster minimum size: 87 mm carapace length

The landing of lobsters below this minimum size is prohibited.

The carriage of lobsters below this minimum size on board a British fishing vessel is prohibited.

The sale, exposure or offering for sale or possession for the purpose of sale of lobsters below this minimum size, which have been landed by a British fishing vessel, is prohibited.

**Kent and Essex Sea Fisheries Byelaws**

No person shall remove from the fishery any berried lobster.

No person shall use or cause to be used for the purpose of fishing for sea fish any parlour pot of whatever material constructed, unless it has at least one unobstructed escape gap per parlour. Any escape gap must:

- a) be located in the exterior wall of the parlour(s)
- b) be so designed and constructed and of sufficient size that there may be easily passed through it a rigid box shaped gauge which measure 84 millimetres wide by 46 millimetres high and 100 millimetres long, and
- c) be fitted in such a way that the longitudinal axis is parallel to the base of the pot and is located in the lowest part of the parlour(s) as is practically possible and in all cases must be within 100 millimetres of the base.

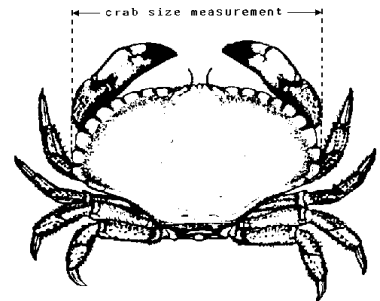
No persons shall use or cause to be used for the purposes of fishing for sea fish any parlour pot unless the door, hinge or clasp fitted to the door of each bait parlour is fitted to the pot by rubber, metal or similar natural material that will, under normal working conditions, required replacement annually.

**EDIBLE CRAB (*Cancer pagurus*) The Edible Crabs Order 2000 / Council Regulation (EC) No 850/98**

This Order prohibits within this district the landing of edible crab measuring less than 130mm by British Vessels.

In the English Channel the minimum landing size is 140mm. In the Eastern Sea Fisheries District the minimum landing size is 115mm.

Crabs measuring less than 115 mm shall not be retained on board or be transhipped, landed, transported, stored, sold, displayed or offered for sale.



Lobsters and edible crab may only be retained on board whole and may only be landed whole. However, for catches made by pots or creels a maximum of 1% by weight of the total catch of edible crabs or parts thereof retained on board or landed may consist of detached claws.

The size of an edible crab, means the width of the carapace parallel to the mid line from the back of either eye socket to the distal edge of the carapace.

Any crabs or lobsters that are protected by these regulations and are taken in the course of fishing must be immediately returned to the sea.

This notice is for general guidance for full details contact your local fishery officer.